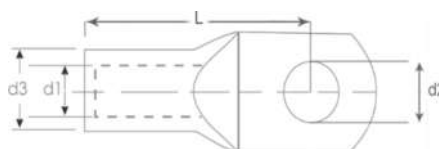


Fully Bimetallic cable lugs

Shahin Mafsal Fully Bimetallic cable lugs are manufactured from 99.5% electrical grade seamless Aluminum tube, covered with 2 layers of special Nickel and Tin electroplating.

This special electroplating process makes this cable lug “Fully Bimetallic”, and therefore, replaceable with DTL1, DTL2, and other types of Copper + Aluminum Bimetallic cable lugs. Same as standard Aluminum cable lugs, this product is also manufactured according to DIN 48291 standard. Fully Bimetallic cable lugs are available for cables from 16 up to 800 mm², and may be used both in low voltage and medium voltage direct cable connections, and in power cable terminations.



Range / Dimensions of the Product

Section (mm ²)	d2 (Ø)	d1 (mm)	d3(mm)	L (mm)	Qty per Inner Box	Qty per Master Box
16	8	5.8	10	52	125	1000
25	8	6.8	12	60	75	600
35	12	8	14	67	50	400
50	12	9.8	16	72	40	320
70	12	11.2	18.5	86	25	200
95	12	13.2	22	90	20	160
120	12	14.7	23	91	20	160
150	12	16.3	25	103	12	96
185	16	18.3	28.5	106	35	70
240	16	21	32	116	25	50
300	16	23.3	34	124	25	50
400	20	26	38.5	165	11	22
500	20	29	44	165	10	20
630	20	35	52	224	5	10
800	20	38.8	59.8	235	5	10

❖ The values in the above table have permissible tolerances.

Selection Table:

KF / ② H ③

① Section	② Bolt (Ø)	
From 16 to 800 mm ²	As Required	

Example:

KA/185H16

Tin-plated Standard Aluminum Cable Lugs size 185 hole 16