

# Poly-fix Cable Cleats

According to IEC 61914, a cable cleat is a device designed to secure cables when installed at intervals along their length. Shahin Mafsal's Poly-fix cable cleat is a polymeric, non-metallic cleat made from reinforced polyamide, suitable for both indoor and outdoor applications. Available in single-core and trefoil designs, Poly-fix cable cleats are compatible with a wide range of cable types and sizes, from low to high voltage, and are designed to perform reliably in extremely harsh environmental conditions. These cleats are fire-retardant, UV-resistant, short-circuit proof, and built for extended durability.



## Applications of Ribbed Rubber Liners:

All types and sizes of our cable cleats may be used with or without rubber liners.

- **Protective Layer:** Ribbed rubber liners act as a protective barrier, preventing excessive pressure on the cable, especially under conditions such as high temperature fluctuations at the installation site.
- **Improved Cable Fixation:** They improve cable fixation by better securing the cable and absorbing its weight, particularly in vertical installations of long cables.
- **Cable Size Adjustment:** Ribbed rubber liners also function as size adjusters for cables. They allow cables with smaller diameters than the cleat's standard size to be effectively secured, restrained, and protected.



Poly-fix series from Shahin Mafsal includes three categories. Each category serves distinct cable installation needs, ensuring flexibility across various operational environments.

## SI Series:

Designed for standard installations where cables require moderate mechanical restraint and environmental resistance, suitable for general-purpose applications.

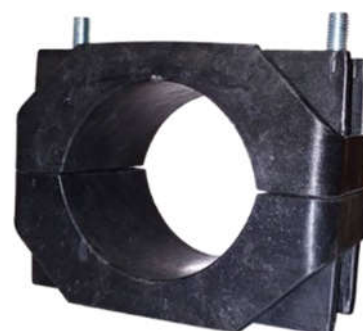
Code	Cables outer diameter range (mm)		
	D	D*	D**
<b>SI2</b>	36-52	33-49	30-46
<b>SI3</b>	50-75	47-72	44-69



## CSI Series:

Designed for larger size cables, this series is suitable for environments with increased mechanical stress, offering enhanced durability and protection.

Code	Cables outer diameter range (mm)		
	D	D*	D**
<b>CSI5</b>	75-100	72-97	69-94
<b>CSI6</b>	100-130	97-127	94-124



## TR Series:

Tailored for trefoil cable arrangements, this series is optimized to secure cables in a triangular configuration, ideal for applications with high short-circuit forces.

Code	Cables outer diameter range (mm)	
	D	D*
<b>TR3</b>	29-41	26-38
<b>TR4</b>	39-53	36-50
<b>TR5</b>	51-64	48-61



- D : Without liner
- D\* : With one liner
- D\*\* : With two liners